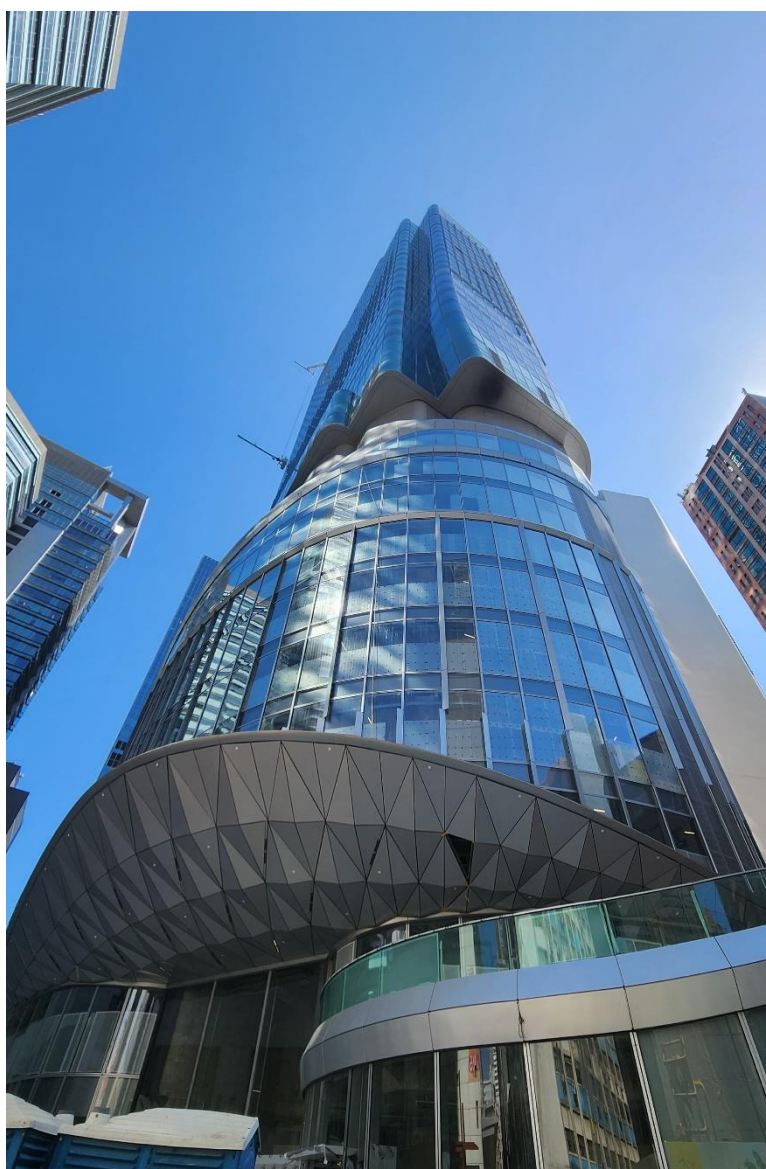


# KTIL 240, How Ming Street, Kwun Tong

KTIL 240, How Ming Street is a grade A commercial building, located at Kwun Tong district. The project involves construction of 33 storeys commercial office and shopping mall, with 4 storeys under ground. The project is constructed by Sun Hung Kai Properties and consulted by WSP.



## location

Hong Kong



## year

2020

## application



## productline

VSH Tectite

## client

Sun Hung Kai Properties

